

Anti-HSP40 Antibody
Rabbit polyclonal antibody to HSP40
Catalog # AP59583**Specification**

Anti-HSP40 Antibody - Product Information

Application	WB, IF/IC, IHC
Primary Accession	P25685
Other Accession	Q9QYJ3
Reactivity	Human, Mouse, Rat, Monkey, Pig, Bovine, Dog
Host	Rabbit
Clonality	Polyclonal
Calculated MW	38044

Anti-HSP40 Antibody - Additional Information**Gene ID** 3337**Other Names**

DNAJ1; HDJ1; HSPF1; DnaJ homolog subfamily B member 1; DnaJ protein homolog 1; Heat shock 40 kDa protein 1; HSP40; Heat shock protein 40; Human DnaJ protein 1; hDj-1

Target/Specificity

Recognizes endogenous levels of HSP40 protein.

Dilution

WB~~WB (1/500 - 1/1000), IH (1/100 - 1/200), IF/IC (1/100 - 1/500)

IF/IC~~N/A

IHC~~1:100~500

Format

Liquid in 0.42% Potassium phosphate, 0.87% Sodium chloride, pH 7.3, 30% glycerol, and 0.09% (W/V) sodium azide.

Storage

Store at -20 °C. Stable for 12 months from date of receipt

Anti-HSP40 Antibody - Protein Information**Name** DNAJB1**Synonyms** DNAJ1, HDJ1, HSPF1**Function**

Interacts with HSP70 and can stimulate its ATPase activity. Stimulates the association between HSC70 and HIP. Negatively regulates heat shock-induced HSF1 transcriptional activity during the attenuation and recovery phase period of the heat shock response (PubMed:<a

[9499401](http://www.uniprot.org/citations/9499401)). Stimulates ATP hydrolysis and the folding of unfolded proteins mediated by HSPA1A/B (in vitro) (PubMed:<[24318877](http://www.uniprot.org/citations/24318877)>).

Cellular Location

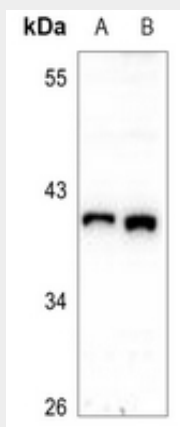
Cytoplasm. Nucleus. Nucleus, nucleolus. Note=Translocates rapidly from the cytoplasm to the nucleus, and especially to the nucleoli, upon heat shock

Anti-HSP40 Antibody - Protocols

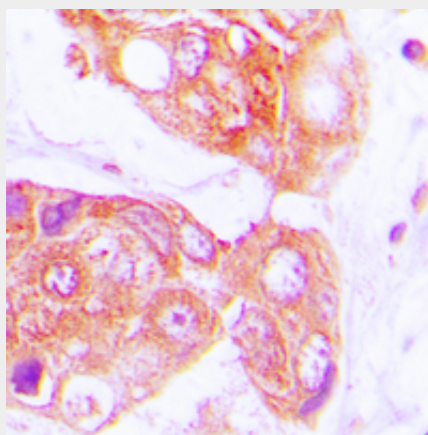
Provided below are standard protocols that you may find useful for product applications.

- [Western Blot](#)
- [Blocking Peptides](#)
- [Dot Blot](#)
- [Immunohistochemistry](#)
- [Immunofluorescence](#)
- [Immunoprecipitation](#)
- [Flow Cytometry](#)
- [Cell Culture](#)

Anti-HSP40 Antibody - Images

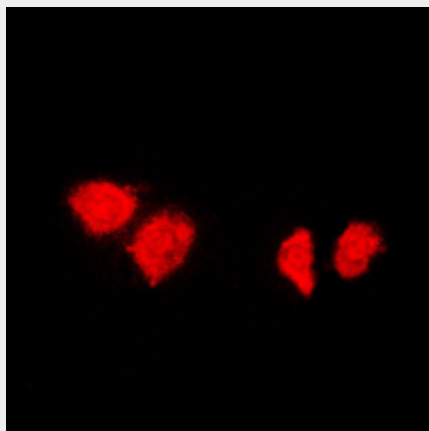


Western blot analysis of HSP40 expression in HEK293T (A), PC3 (B) whole cell lysates.



Immunohistochemical analysis of HSP40 staining in human lung cancer formalin fixed paraffin

embedded tissue section. The section was pre-treated using heat mediated antigen retrieval with sodium citrate buffer (pH 6.0). The section was then incubated with the antibody at room temperature and detected using an HRP conjugated compact polymer system. DAB was used as the chromogen. The section was then counterstained with haematoxylin and mounted with DPX.



Immunofluorescent analysis of HSP40 staining in HeLa cells. Formalin-fixed cells were permeabilized with 0.1% Triton X-100 in TBS for 5-10 minutes and blocked with 3% BSA-PBS for 30 minutes at room temperature. Cells were probed with the primary antibody in 3% BSA-PBS and incubated overnight at 4 °C in a humidified chamber. Cells were washed with PBST and incubated with a DyLight 594-conjugated secondary antibody (red) in PBS at room temperature in the dark.

Anti-HSP40 Antibody - Background

KLH-conjugated synthetic peptide encompassing a sequence within the C-term region of human HSP40. The exact sequence is proprietary.